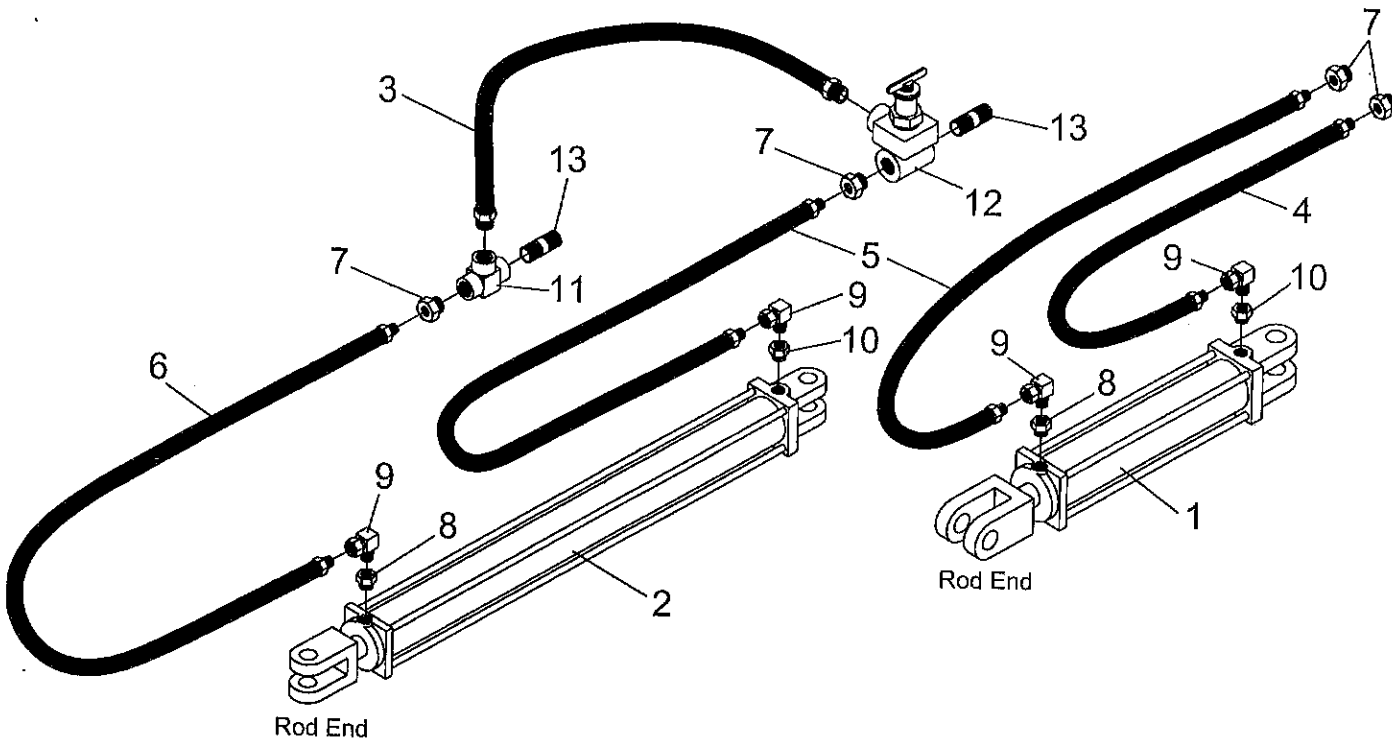
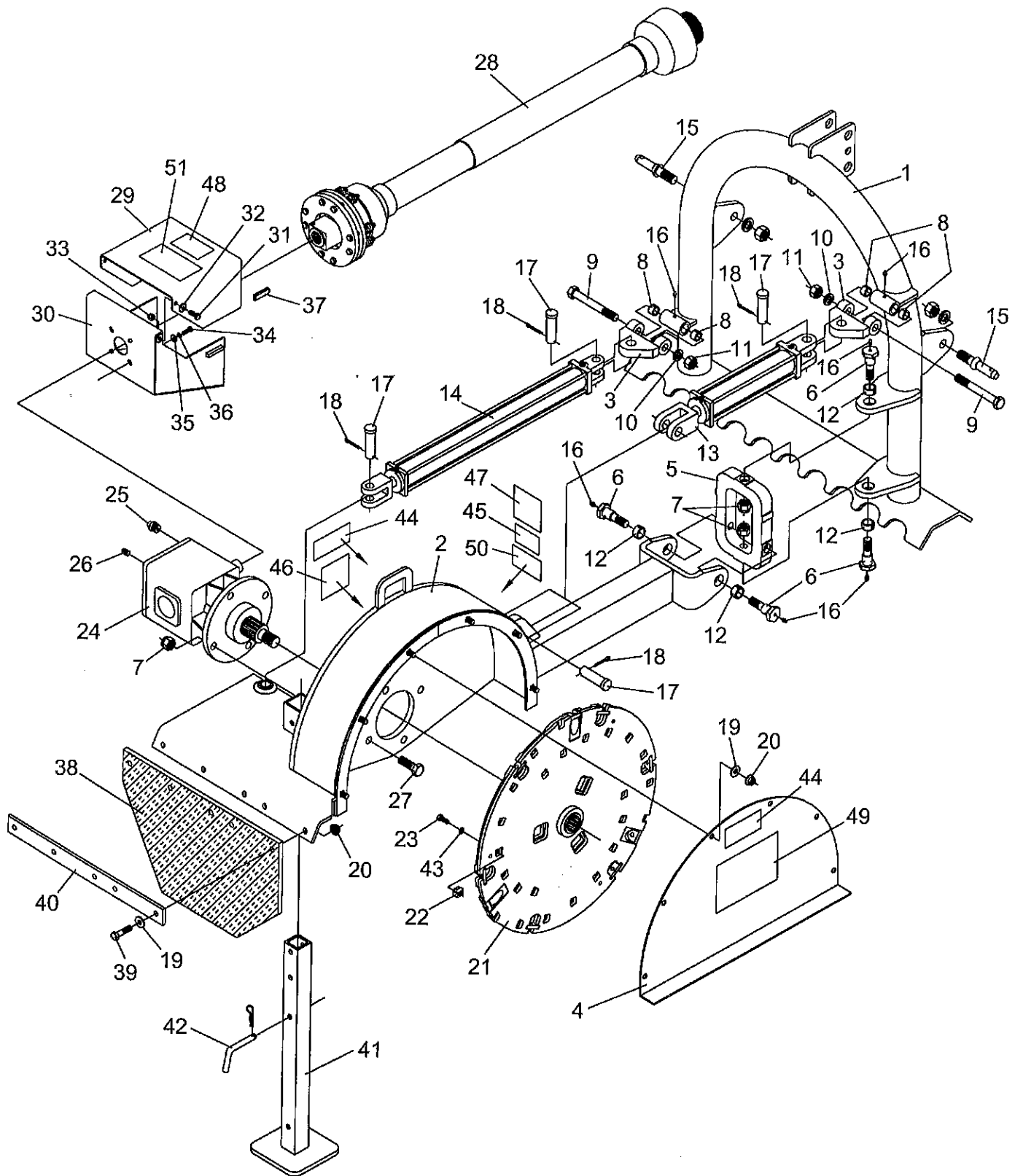


STUMP GRINDER HYDRAULIC DIAGRAM PARTS DRAWING & LIST

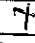


Ref. No.	Part No.	Description	No. Req'd.
1	2504215	Hydraulic Cylinder 2 1/2" x 10"	1
2	2504120	Hydraulic Cylinder 2" x 24"	1
3	2505630	Hose, Hydraulic 1/2" ID x 12"	1
4	2505532	Hose, Hydraulic 1/4" ID x 60"	1
5	2505533	Hose, Hydraulic 1/4" ID x 72"	2
6	2505537	Hose, Hydraulic 1/4" ID x 96"	1
7	2505507	Bushing, Reducer 1/2" to 1/4"	4
8	2505626	Bushing, Reducer 3/8" to 1/4" w/ .040" Orifice	2
9	2505530	Elbow, 90° Swivel 1/4"-18NPT	4
10	2505517	Bushing, Reducer 3/8" to 1/4"	2
11	2505553	Tee, Hydraulic 1/2"NPT	1
12	2505627	Valve, Relief (Low Pressure)	1
13	2505512	Pipe Nipple 1/2" x 2"	2

SG-26 STUMP GRINDER PARTS DRAWING

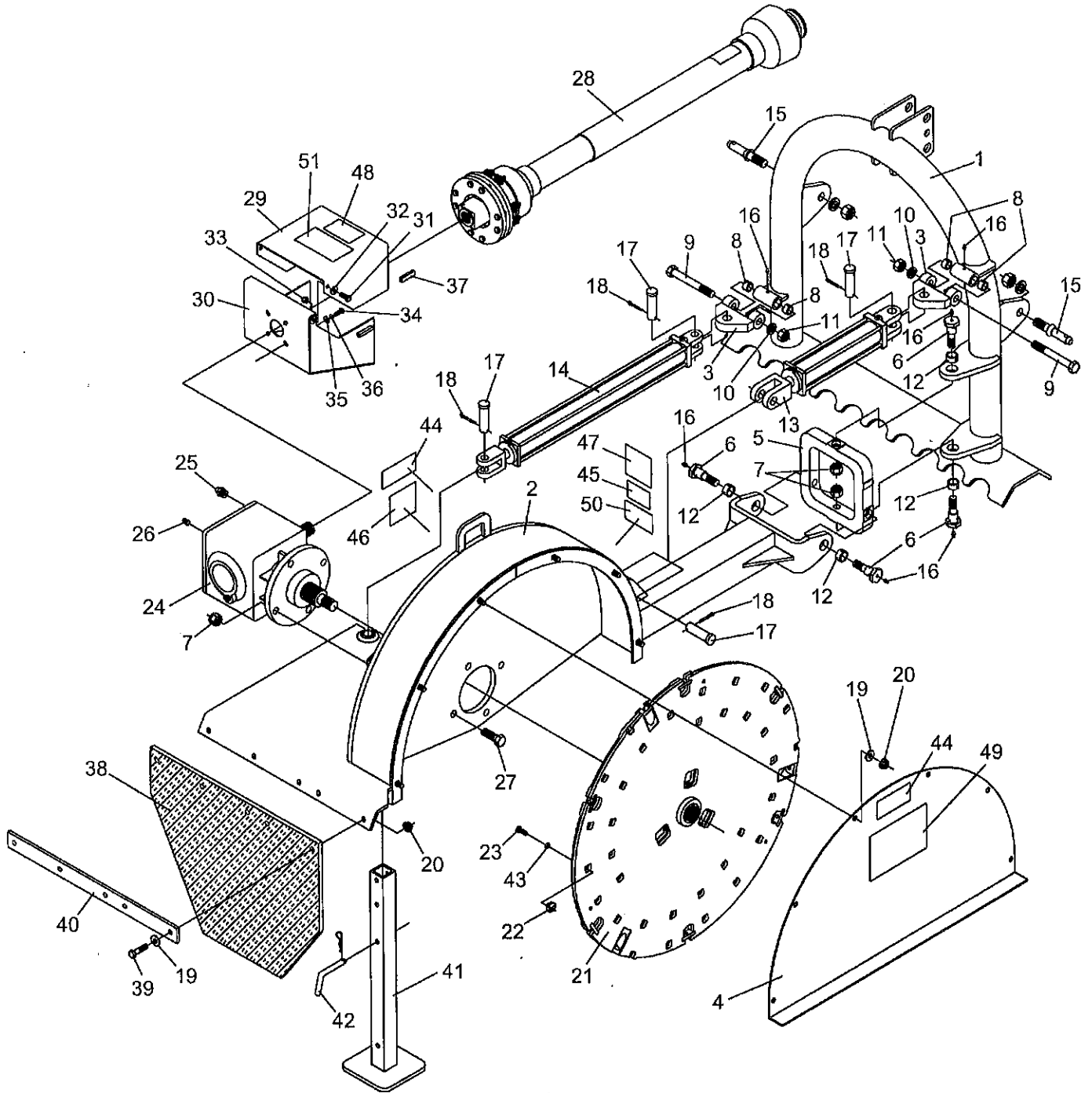


SG-26 STUMP GRINDER PARTS LIST

Ref. No.	Part No.	Description	No. Req'd.
1	811505	3 Pt. Yoke Weldment	1
2	811515	Housing Weldment	1
3	811525	Anchor Weldment	2
4	811510	Wheel Guard Weldment	1
5	811522	Pivot Cross (7" x 10")	1
6	811517	Special Bolt 3/4"-10NC	4
7	2500084	Nut 3/4"-10NC Vibration Proof	8
8	803185	Bushing, Spring (3/4" ID x 1" OD x 5/8")	4
9	2503035	Bolt 3/4"-10NC x 6" Hex Head Gr.5	2
10	2502001	Washer 3/4" Springlock	2
11	2500002	Nut 3/4"-10NC Full Hex	2
12	2505034	Bushing, Spring (1" ID x 1 1/4" OD x 5/8")	4
13	2504215	Hydraulic Cylinder 2 1/2 x 10	1
14	2504120	Hydraulic Cylinder 2 x 24	1
15	590108	Draw Pin (AK-578)	2
16	2504049	Drive Zerk 5/16"	6
17	863070	Cylinder Pin Ø1"	4
18	2504121	Cotter Pin 3/16" x 1 1/2"	4
19	2501003	Washer 1/2" Flat	11
20	2500040	Nut 1/2"-13NC Whiz Flange Hex	11
21	811531	Grinder Wheel Weldment (SG-26)	1
22	811534	Carbide Tooth * 	33
23	2503061	Bolt 3/8"-16NC x 1" Hex Head Gr.8	33
24	811567	Gearbox Assembly w/Plugs	1
25	2504072	Breather Plug 1/2"NPT	1
26	2504222	Pipe Plug 1/4"NPT Square Head	1
27	2503258	Bolt 3/4"-10NC x 2 1/4" Hex Head Gr.5	4
28	650475	PTO Assembly	1
	650497	PTO Half (Implement End)	1
	650498	PTO Half (Tractor End)	1
29	811540	Lid, Shield	1
30	811520	PTO Shield Weldment	1
31	2503011	Bolt 3/8"-16NC x 1" Hex Head Gr.2	2
32	2501004	Washer 3/8" Flat	2
33	2500042	Nut 3/8"-16NC Hex Nylock	2
34	2503123	Bolt M8 x 12mm Hex Head	4
35	2501012	Washer 5/16" Flat	4
36	2502011	Washer 5/16" Springlock	4
37	811559	Edging Strip 2"	2
38	811541	Rubber Guard	1
39	2503007	Bolt 1/2"-13NC x 2" Hex Head Gr.2	5
40	811547	Guard Retainer Strap	1
41	811557	Stand Weldment	1
42	341826	Hitch Pin 1/2" x 3 1/2"	1
43	2502008	Washer 3/8" Springlock	33
44	101027	Safety Sign-Warning (Stand Clear)	2
45	101101	Safety Sign-Warning (540 RPM)	1
46	101103	Safety Sign-Danger (Keep Away)	1
47	101122	Safety Sign-Warning (Hi-Pressure)	1
48	101186	Safety Sign-Warning (Shields)	1
49	101206	Safety Sign-Danger (Debris)	1
50	101219	Safety Sign-Warning (Valve)	1
51	101201	Safety Sign-Warning (Manual)	1

* NOTE: Order 811600 for repair kit containing (12) twelve carbide teeth, bolts & washers

SG-36 STUMP GRINDER PARTS DRAWING

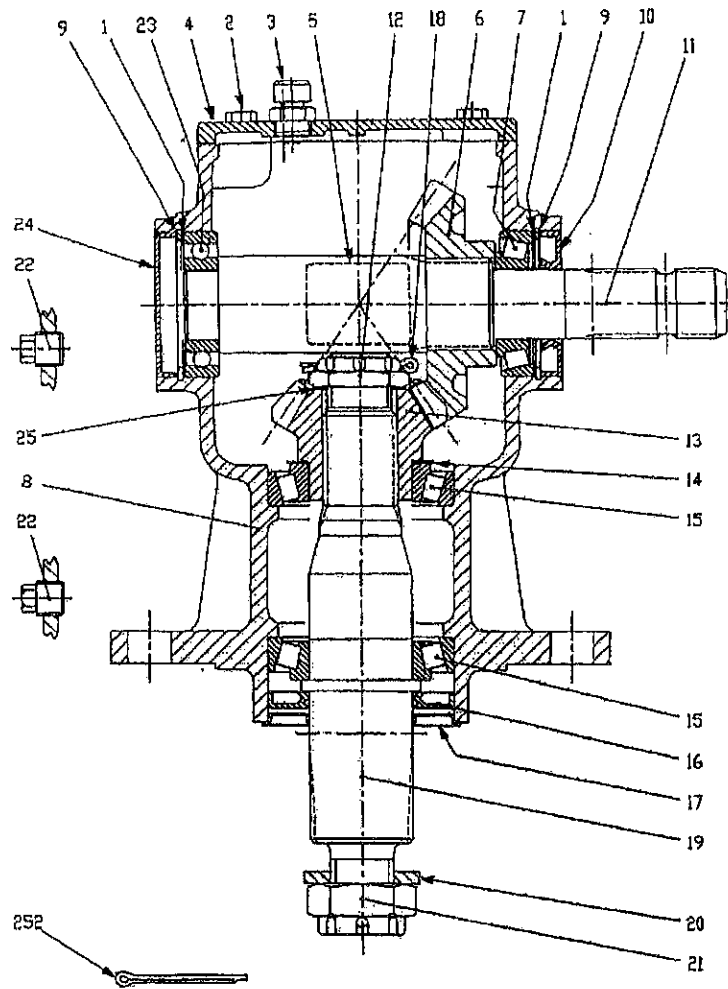


SG-36 STUMP GRINDER PARTS LIST

Ref. No.	Part No.	Description	No. Req'd.
1	811505	3 Pt. Yoke Weldment	1
2	811545	Housing Weldment	1
3	811525	Anchor Weldment	2
4	811560	Wheel Guard Weldment	1
5	811551	Pivot Cross (10" x 10")	1
6	811517	Special Bolt 3/4"-10NC	4
7	2500084	Nut 3/4"-10NC Vibration Proof	8
8	803185	Bushing, Spring (3/4" ID x 1" OD x 5/8")	4
9	2503035	Bolt 3/4"-10NC x 6" Hex Head Gr.5	2
10	2502001	Washer 3/4" Springlock	2
11	2500002	Nut 3/4"-10NC Full Hex	2
12	2505034	Bushing, Spring (1" ID x 1 1/4" OD x 5/8")	4
13	2504215	Hydraulic Cylinder 2 1/2 x 10	1
14	2504120	Hydraulic Cylinder 2 x 24	1
15	590078	Draw Pin (AK-2118)	2
16	2504049	Drive Zerk 5/16"	6
17	863070	Cylinder Pin Ø1"	4
18	2504121	Cotter Pin 3/16" x 1 1/2"	4
19	2501003	Washer 1/2" Flat	11
20	2500040	Nut 1/2"-13NC Whiz Flange Hex	11
21	811536	Grinder Wheel Weldment (SG-36)	1
22	811534	Carbide Tooth *	42
23	2503061	Bolt 3/8"-16NC x 1" Hex Head Gr.8	42
24	811572	Gearbox Assembly w/Plugs	1
25	2504072	Breather Plug 1/2"NPT	1
26	2504222	Pipe Plug 1/4"NPT Square Head	1
27	2503085	Bolt 3/4"-10NC x 2 1/2" Hex Head Gr.5	4
28	650280	PTO Assembly	1
	650329	PTO Half (Implement End)	1
	650328	PTO Half (Tractor End)	1
29	811540	Lid, Shield	1
30	811520	PTO Shield Weldment	1
31	2503011	Bolt 3/8"-16NC x 1" Hex Head Gr.2	2
32	2501004	Washer 3/8" Flat	2
33	2500042	Nut 3/8"-16NC Hex Nylock	2
34	2503123	Bolt M8 x 12mm Hex Head	4
35	2501012	Washer 5/16" Flat	4
36	2502011	Washer 5/16" Springlock	4
37	811559	Edging Strip 2"	2
38	811571	Rubber Guard	1
39	2503007	Bolt 1/2"-13NC x 2" Hex Head Gr.2	5
40	811548	Guard Retainer Strap	1
41	811557	Stand Weldment	1
42	341826	Hitch Pin 1/2" x 3 1/2"	1
43	2502008	Washer 3/8" Springlock	42
44	101027	Safety Sign-Warning (Stand Clear)	2
45	101101	Safety Sign-Warning (540 RPM)	1
46	101103	Safety Sign-Danger (Keep Away)	1
47	101122	Safety Sign-Warning (Hi-Pressure)	1
48	101186	Safety Sign-Warning (Shields)	1
49	101206	Safety Sign-Danger (Debris)	1
50	101219	Safety Sign-Warning (Valve)	1
51	101201	Safety Sign-Warning (Manual)	1

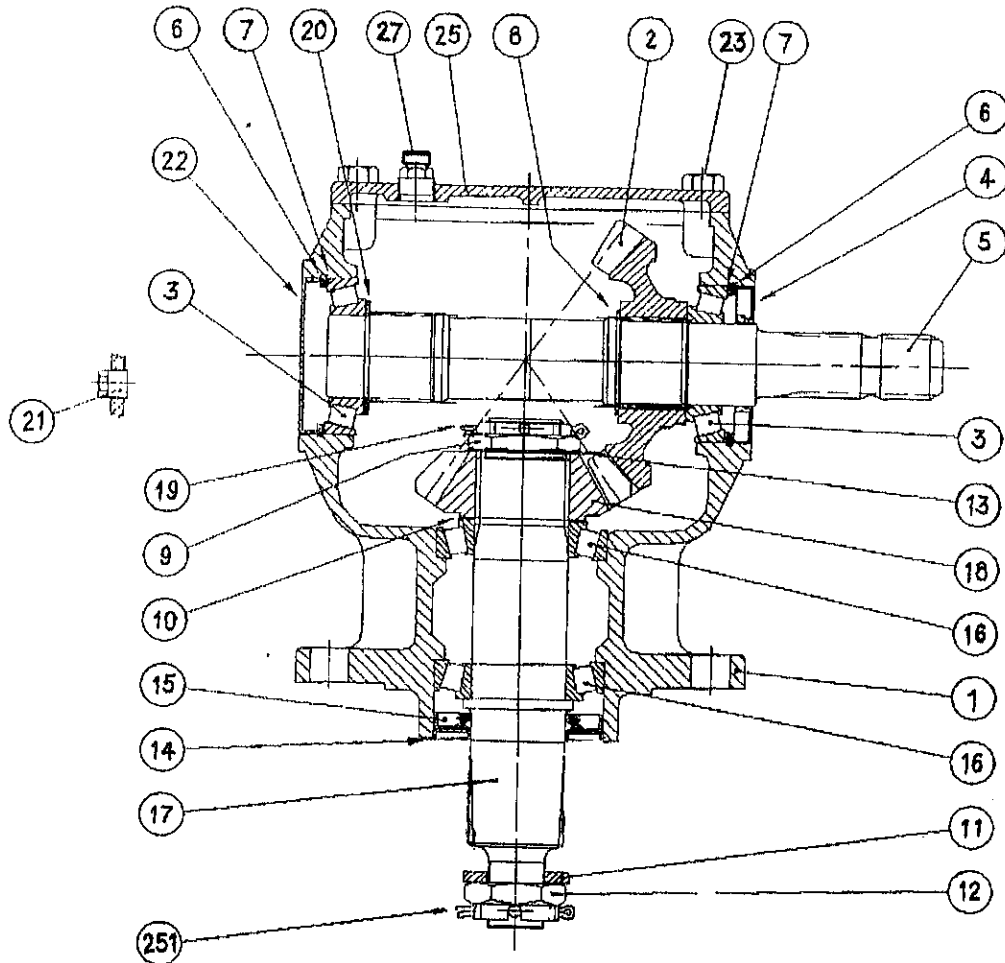
* NOTE: Order 811600 for repair kit containing (12) twelve carbide teeth, bolts & washers

SG-26 GEARBOX PARTS DRAWING & LIST



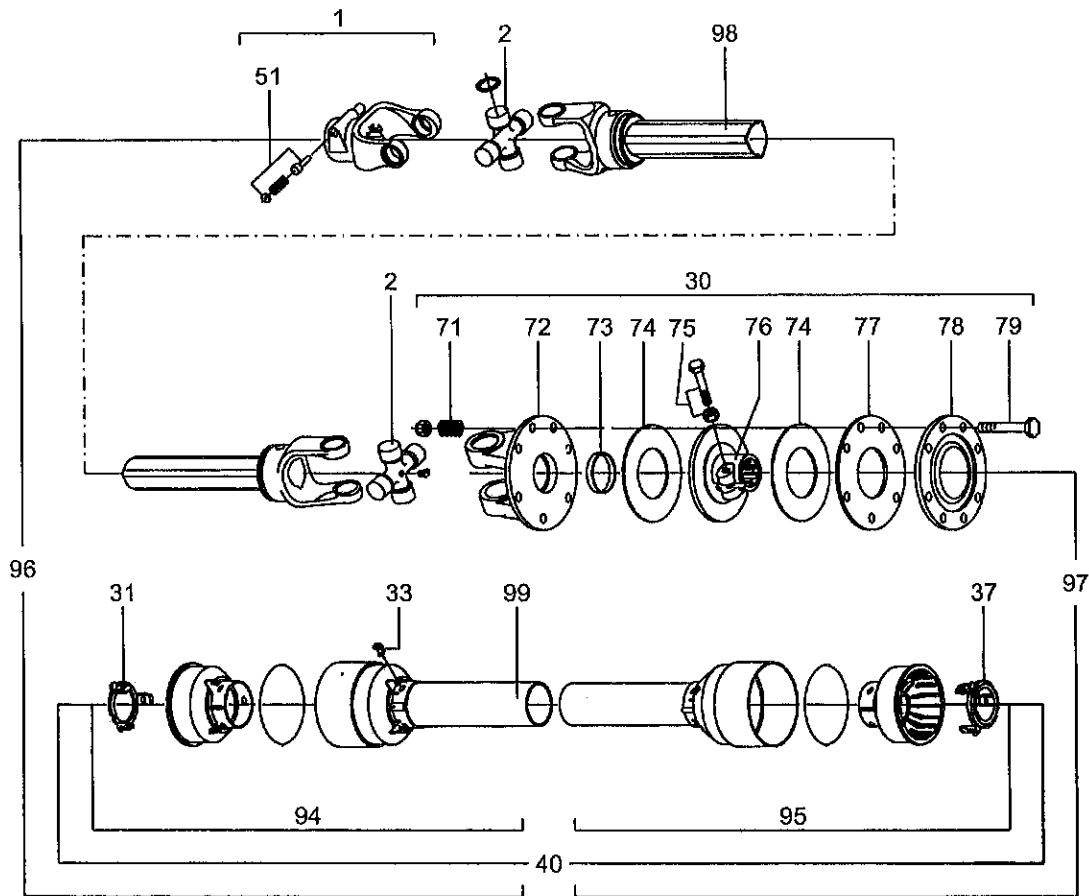
Ref. No.	Worksaver Part No.	Comer Part No.	Description	No. Req'd.
1	650267	0.248.7500.00	Shim Kit (60.3 x 71.7)	2
2	650481	8.1.1.00041	Boit M8 x 22 HH (8.8)	4
3	2504072	8.6.7.00269	1/2" Oil Filler Vent Plug	1
4	811563		Cover	1
5	Not Available	0.124.7135.00	Plate	1
6	650473	0.132.6004.00	Crown Z21 M5.7	1
7	650281	8.0.9.00026	Roller Bearing 30207 (35 x 72 x 18.25)	1
8	650290	0.140.0300.00	Housing	1
9	650264	8.5.2.00131	Snap Ring (72 x 75 x 2.5)	2
10	650282	8.7.3.00055	Oil Seal (35 x 72 x 10)	1
11	650283	0.140.2000.00	Input Shaft	1
12	650484	0.132.7106.00	Castle Nut M30 x 1.5	1
13	650431	0.116.6204.00	Conic Pinion Z14 M5.7	1
14	650422	0.712.7500.00	Shim Kit (50.3 x 70.3)	1
15	650423	8.0.9.00469	Roller Bearing 30210 (50 x 90 x 21.75)	2
16	650289	8.7.1.01107	Oil Seal (50 x 90 x 10)	1
17	650288	0.139.7100.00	Protective Washer	1
18	650489	8.4.7.01111	Cotter Pin B4 x 50	1
19	650285	0.140.3002.00	Output Shaft	1
20	650286	0.139.7101.00	Flat Washer (31 x 56 x 6)	1
21	650287	0.140.7102.00	Castle Nut M30 x 2 (8.8)	1
22	709052	8.6.5.00006	3/8" Solid Plug	2
23	171017	8.0.1.00870	Ball Bearing 6207 (35 x 72 x 17)	1
24	650263	8.7.0.00744	Oil Cap (Ø72 x 10)	1
25	650291	0.102.7510.00	Shim Kit (30.3 x 44 x 1)	1
252	650482	8.4.7.00146	Cotter Pin - Unl 1336 B6 x 60	1
NS	2504222		Pipe Plug 1/4" NPT Square Head	1

SG-36 GEARBOX PARTS DRAWING & LIST



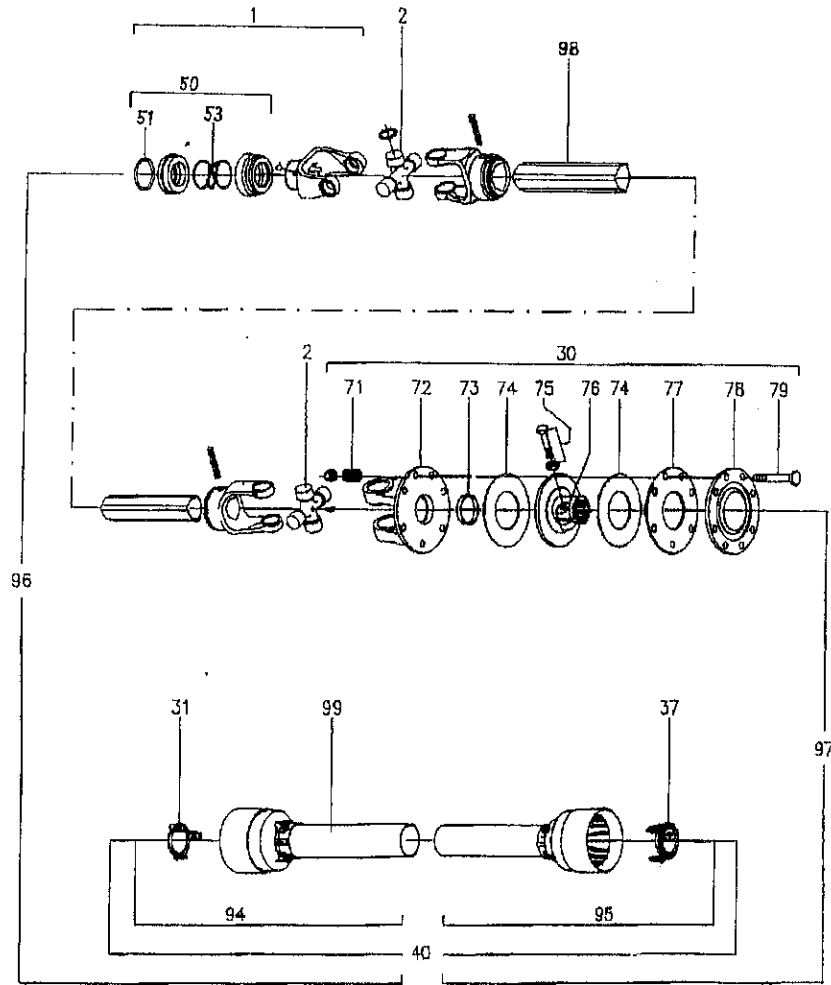
Ref. No.	Worksaver Part No.	Comer Part No.	Description	No. Req'd.
1	811574	U0.100.0300.03	Casting & Machining	1
2	811575	U0.100.6205.02	Gear Crown Z19 M8	1
3	811580	8.0.9.00143	Bearing 30209 (45 x 85 x 20.75)	2
4	811581	8.7.3.00331	Oil Seal (45 x 85 x 10)	1
5	811576	U0.100.2002.01	Input Shaft 1 3/8" Z6	1
6	811582	8.5.2.00332	Snap Ring (85 x 88.5 x 3)	2
7	811583	0.709.7500.00	Shim Kit (70.3 x 84.7)	2
8	811584	8.5.1.00533	Snap Ring (50 x 47 x 2)	1
9	811585	0.132.7107.00	Castle Nut M40 x 1.5	1
10	650422	0.712.7500.00	Shim Kit (50.3 x 70.3)	1
11	650286	0.139.7101.00	Flat Washer (31 x 56 x 6)	1
12	650434	8.2.2.00555	Castle Nut M30 x 2	1
13	811586	0.285.7510.00	Shim (40.3 x 61.7 x 1)	1
14	650288	0.139.7100.00	Protective Washer	1
15	650289	8.7.1.01107	Oil Seal (50 x 90 x 10)	1
16	650423	8.0.9.00469	Roller Bearing 30210 (50 x 90 x 21.75)	2
17	811577	U0.100.3003.02	Shaft Output	1
18	811578	U0.100.5204.02	Pinion Z13 M8	1
19	811587	8.4.7.02265	Cotter Pin B5 x 60	1
20	811588	0.252.7525.00	Shim (45.3 x 65.3 x 2.5)	1
21	709052	8.6.5.00006	3/8" Solid Plug	1
22	811589	0.121.7101.00	Oil Cap (85 x 10)	1
23	811590	8.1.1.00031	Bolt M8 x 25 HHB (8.8)	4
25	811573		Cover	1
27	2504072	8.6.7.00269	1/2" Oil Filler Vent Plug	1
251	650482	8.4.7.00146	Cotter Pin - Uni 1336 B6 x 60	1
NS	2504222		Pipe Plug 1/4" NPT Square Head	1

SG-26 PTO SHAFT PARTS DRAWING & LIST



Ref. No.	Worksaver Part No.	Ref. No. (E & G)	Description	No. Req'd.
	650475	07.582.024.10	Complete Driveline Assembly	1
1	650701	141.025.001	Push Pin Yoke 112	1
2	650702	180.015.130	Cross Journal Set	2
30	650740	146.252.011	Complete Disc Clutch	1
31	650710	180.015.009	Guard Retaining Collar for Outer Tube	1
33	650712	190.000.019	Bolt, Plastic Retainer	6
37	650716	180.015.008	Guard Retaining Collar for Inner Tube	1
40	650763	142.250.007.7520	Complete Guard	1
51	650719	166.026.004	Push Pin Set 1 3/8"	1
71	650745	180.019.017	Spring	8
72	650746	151.015.038	Flanged Yoke	1
73	650747	180.019.019	Bushing	1
74	650748	180.019.018	Lining Ring	2
75	650749	165.000.502	Bolt M12 x 1.25 x 65 w/Nut	2
76	650750	151.018.018	Clutch Support	1
77	650751	180.019.014	Inner Plate	1
78	650752	180.019.116	Pressure Plate	1
79	650753	165.000.549	Bolt M10 x 85 w/Nut	8
94	650764	142.251.170.7520	Half Female Guard	1
95	650765	142.251.247.7521	Half Male Guard	1
96	650766	123.250.708.10	Half Female Shaft w/Guarding	1
97	650767	123.250.398.10	Half Male Shaft w/Guarding	1
98	650726	190.000.098	"DANGER" Label for Outer Tube	1
99	650727	190.000.099	"DANGER" Label for Outer Guard Tube	1

SG-36 PTO SHAFT PARTS DRAWING & LIST



Ref. No.	Worksaver Part No.	Comer Part No.	Description	No. Req'd.
	650280	07.682.088.10	Complete Driveline Assembly	1
1	650292	141.026.544	Complete Collar Yoke C12	1
2	650293	180.016.130	Cross Journal Set	2
30	650294	146.262.011	Complete Disc Clutch F22	1
31	650295	180.016.016	Guard Retaining Collar for Outer Tube	1
37	650296	180.016.015	Guard Retaining Collar for Inner Tube	1
40	650297	142.260.051.7620	Complete Guard	1
50	650298		Slide Lock Collar Repair Kit	1
51	650299	190.000.451	Outer Circlip	1
53	650314	180.016.487	Spring, Collar	1
71	650745	180.019.017	Spring, Disc Clutch	8
72	650317	151.016.037	Flanged Yoke	1
73	650747	180.019.019	Bushing	1
74	650748	180.019.018	Lining Ring	2
75	650749	165.000.502	Bolt M12 x 1.25 x 65 w/Nut	1
76	650750	151.018.018	Clutch Support F22	1
77	650751	180.019.014	Inner Plate	1
78	650752	180.019.116	Pressure Plate	1
79	650753	165.000.549	Bolt M10 x 85 w/Nut	8
94	650318	142.261.033.7620	Half Female Guard	1
95	650319	142.261.334.7620	Half Male Guard	1
96	650328	123.360.226.10	Half Female Shaft w/Guarding (Tractor End)	1
97	650329	123.460.286.10	Half Male Shaft w/Guarding (Implement End)	1
98	650726	190.000.098	"DANGER" Label for Outer Tube	1
99	650727	190.000.099	"DANGER" Label for Outer Guard Tube	1